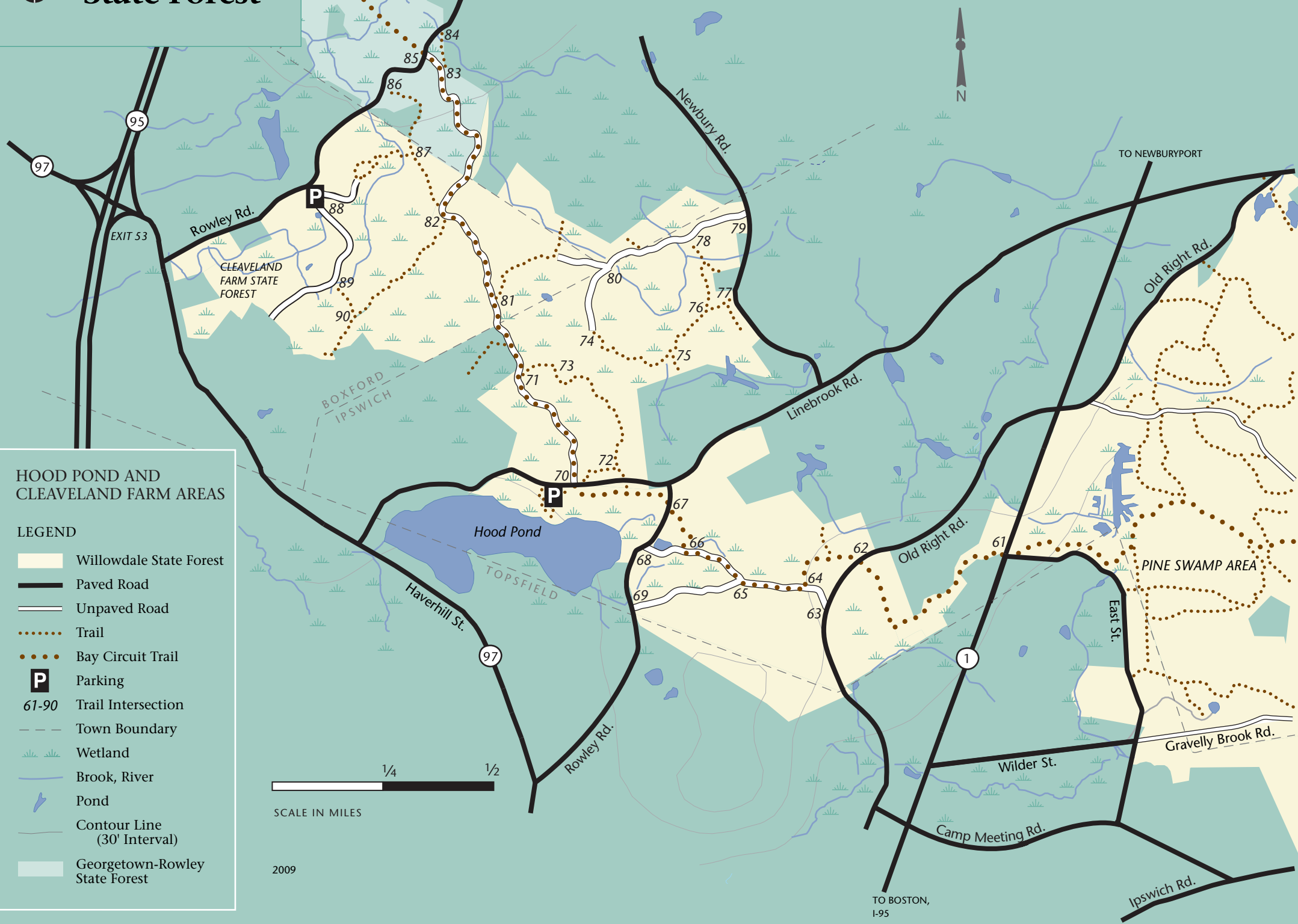


GEORGETOWN-ROWLEY STATE FOREST



HOOD POND AND CLEVELAND FARM AREAS

- LEGEND**
-  Willowdale State Forest
 -  Paved Road
 -  Unpaved Road
 -  Trail
 -  Bay Circuit Trail
 -  Parking
 -  61-90 Trail Intersection
 -  Town Boundary
 -  Wetland
 -  Brook, River
 -  Pond
 -  Contour Line (30' Interval)
 -  Georgetown-Rowley State Forest



SCALE IN MILES

2009

TO BOSTON, I-95

Ipswich Rd.

Camp Meeting Rd.

Wilder St.

Gravelly Brook Rd.

East St.

PINE SWAMP AREA

Old Right Rd.

Linebrook Rd.

Old Right Rd.

TO NEWBURYPORT

Newbury Rd.

Rowley Rd.

CLEVELAND FARM STATE FOREST

BOXFORD IPSWICH

TOPSFIELD

Haverhill St.

97

1

P

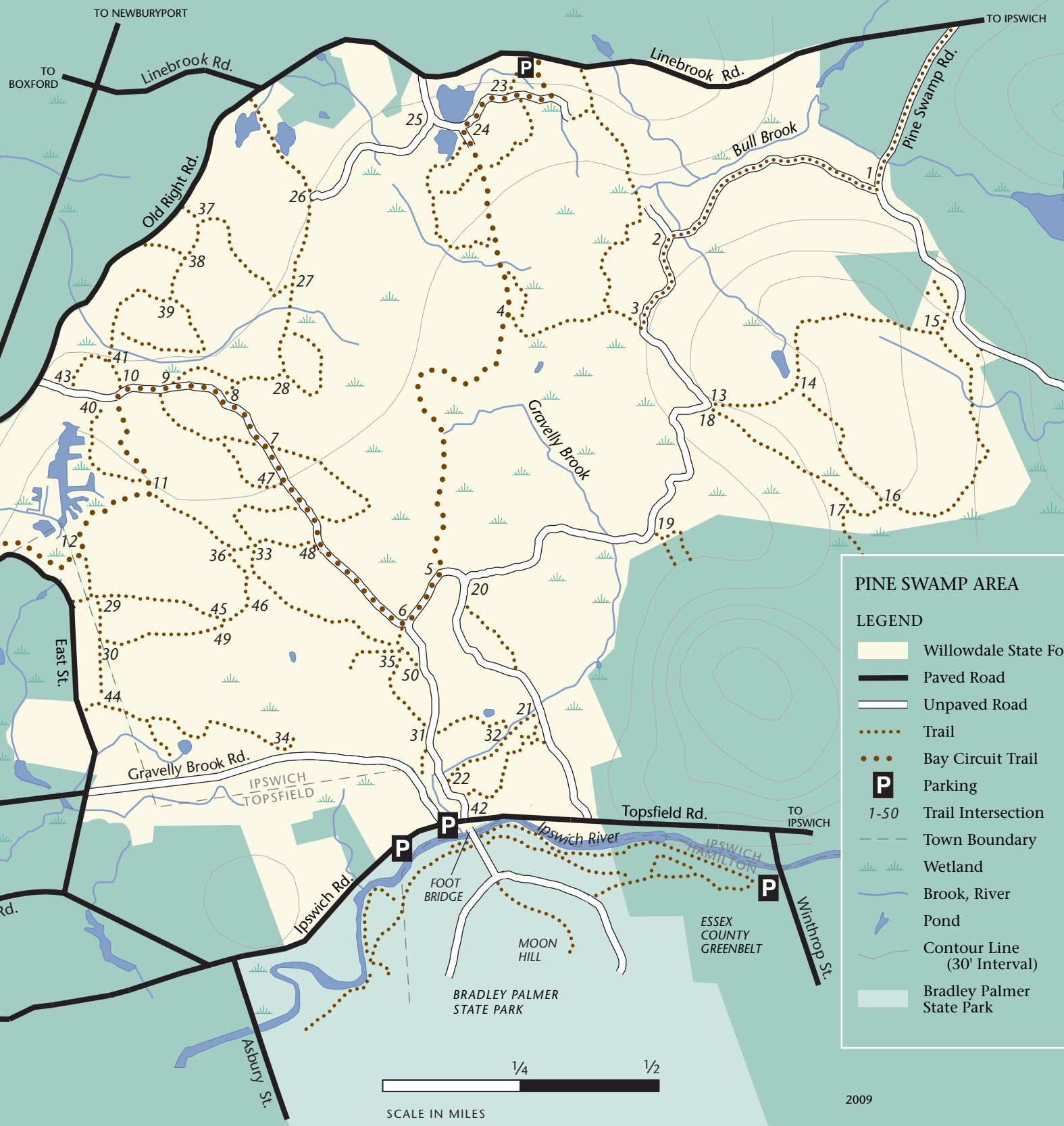
P





TO HOOD POND AREA
(SEE OTHER SIDE)

TO RTE. 95,
BOSTON



PINE SWAMP AREA

LEGEND

-  Willowdale State Forest
-  Paved Road
-  Unpaved Road
-  Trail
-  Bay Circuit Trail
-  Parking
-  Trail Intersection
-  Town Boundary
-  Wetland
-  Brook, River
-  Pond
-  Contour Line (30' Interval)
-  Bradley Palmer State Park